

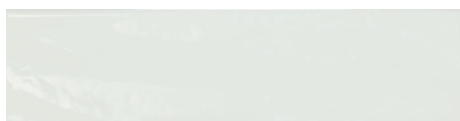
Crossville Studios

NEW YORKER



CHARCOAL

The hand-made characteristics of the New Yorker series gives each white body, double fired ceramic tile its smooth, glossy finish with the perception of movement and the depth of refined structures. This sleek, yet textured tile works beautifully in both modern and old-world spaces. New Yorker is recommended for wall tile applications only and has a glossy finish.



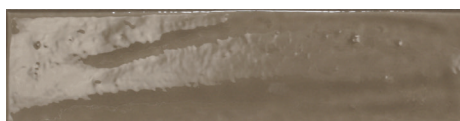
BRIGHT WHITE
SETNYKWHI312



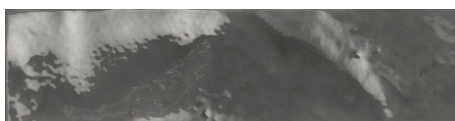
SMOKE
SETNYKSMO312



CARAMEL
SETNYKCAR312



TAUPE
SETNYKTAU312



CHARCOAL
SETNYKCHA312



NIGHT
SETNYKNIG312

Available Sizes

Thickness 10 mm ±



3 x 12



.5 x 12
Glossy Quarter Round

Technical Specifications

Product Performance	Result	Testing Method
Water Absorption	> 10%	ISO 10545-3
Bending Strength	> 17 N/mm ²	ISO 10545-4
Chemical Resistance	Class A	ISO 10545-13
Stain Resistance	Class 5	ISO 10545-14
Shade Variation	V2	
Grout Thickness	Minimum of 2 mm (5/64") recommended	
Usage	Suitable for residential and commercial interior wall applications.	

View other great product options and find detailed product specifications at

crossvillestudios.com



Photo features New Yorker Bright White 3 x 12.