

Color Blox 2.0

Porcelain Stone®



Color Blox 2.0

Porcelain Stone[®]

Celebrate the enduring power and infinite possibilities of color with Color Blox 2.0.

This fresh faced enhancement to the original Color Blox line reignites the collection with bright playfulness grounded in nature's roots. With warmer, on-trend neutrals, blues and greens rooted in biophilic design trends, and a brighter, cleaner white, this concrete inspired line brings a modern, clean sensibility to tile. Color Blox 2.0 is about more than color. It is about functionality. This line brings to you a variety of sizes – 4 x 12, 6x6, 12x12, 12x24, and an impressive 24x24 – all calibrated to coordinate with one another. Keep it simple or play with pattern to achieve dynamic designs. And when you are done, finish the job with a variety of trim from cove bases and bull noses to corners and mosaics. Made in the USA, Color Blox 2.0 is Green Square Certified and Petal Certified by the International Living Future Institute, making it a beautiful responsible selection for your next design project. Bring joy and play back to design with Color Blox 2.0, the next generation of colorful tile from Crossville.

Learn more at CrossvilleInc.com.



Floor: **CBX33** ▶ Wet Clay 12 x 24



Floor and Wall: **CBX01** Sandbox, **CBX38** Little Boy Blue, **CBX35** Celestial Horizon and **CBX13** Blue Suede Shoes 6 X 6





Floor: **CBX03** ▶ Slinky 12 x 24 and 3 x 3 Mosaic
 Wall: **CBX34** ▶ Spring Sage 12 x 12 and 3 x 3 Mosaic



Floor: **CBX07** ▶ Mud Pie 12 x 12
 Wash Tub: **CBX07** ▶ Mud Pie 3 x 3 Mosaic

Color Palette

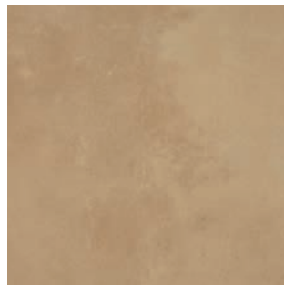
Available Colors



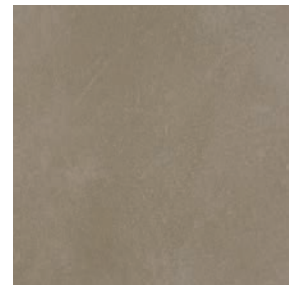
CBX01 ▶ Sandbox



CBX03 ▶ Slinky



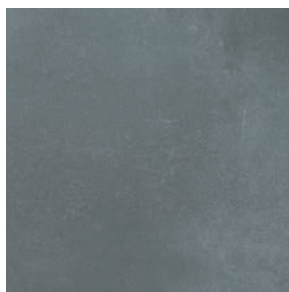
CBX07 ▶ Mud Pie



CBX08 ▶ Sea Otter



CBX14 ▶ Tree House



CBX13 ▶ Blue Suede Shoes



CBX17 ▶ I See the Moon



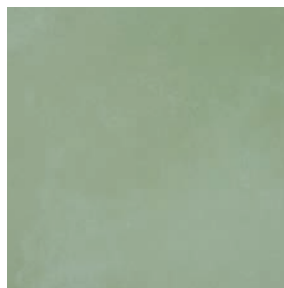
CBX31 ▶ Cotton Sheets



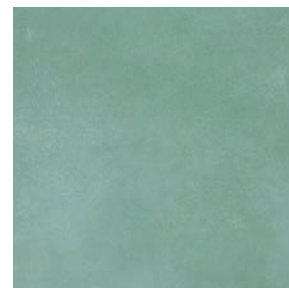
CBX32 ▶ Boot Black



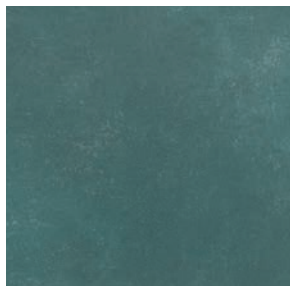
CBX33 ▶ Wet Clay



CBX34 ▶ Spring Sage



CBX35 ▶ Celestial Horizon



CBX36 ▶ Just Ducky



CBX37 ▶ Cayenne



CBX38 ▶ Little Boy Blue





Floor: **CBX35** ▶ Celestial Horizon 12 x 12



Floor: **CBX31** ▶ Cotton Sheets and **CBX32** ▶ Boot Black 12 x 12



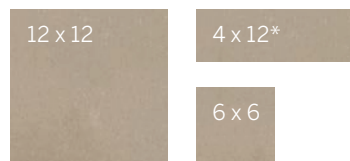
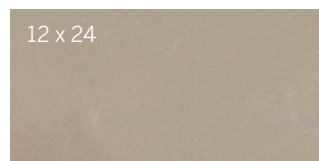
Exterior Wall: **CBX01** ▶ Sandbox 12 x 24 and **CBX36** ▶ Just Ducky 3 x 3 Mosaics



Floor: **CBX14** ▶ Tree House 12 x 24
Wall: **CBX01** ▶ Sandbox 6 x 6

Specifications

Sizes Shown in CBX33 Wet Clay



3 x 3 Mosaics

Get Planked!

Our Porcelain Stone® products are available in popular plank shapes with no minimum order and quick fulfillment.

See website for more details and sizes.



Sizes & Finishes

Field Tile

| Nominal (in) | Actual (in) | Thickness (mm) | Grout Joint (in) | Finish |
|--------------|---------------------|----------------|------------------|--------|
| 4 x 12†* | 3-3/4 x 11-3/4 | 9.5 | 3/16 | UPS |
| 6 x 6 | 5-13/16 x 5-13/16 | 9.5 | 3/16 | UPS |
| 12 x 12 | 11-13/16 x 11-13/16 | 9.5 | 3/16 | UPS |
| 12 x 24 | 11-13/16 x 23-13/16 | 9.5 | 3/16 | UPS |
| 24 x 24** | 23-13/16 x 23-13/16 | 10.5 | 3/16 | UPS |

All field tile is calibrated (non-rectified). Crossville recommends a minimum 3/16" grout joint.

† The cut/bevel tile is cut from a larger format tile and the edges are beveled to provide a factory appearance.

* Custom Cut Program. Allow 2-4 weeks based on availability for delivery.

** 24 x 24 is available in these colors only: CBX01, CBX03, CBX07, CBX08, CBX14, CBX17, CBX31, CBX32 and CBX33

Mosaic

| Nominal (in) | Actual (in) | Thickness (in) | Grout Joint (in) | Finish |
|--------------|---------------|----------------|------------------|--------|
| 3 x 3* | 2-7/8 x 2-7/8 | 6.4 | 1/8 | UPS |

* 3 x 3 Mosaic Tile in 11-3/4 x 11-3/4 sheets with a 1/8 inch grout joint.

Coordinating Trim

| Nominal (in) | Actual (in) | Thickness (in) | Grout Joint (in) | Finish |
|---------------------------------------|------------------|----------------|------------------|--------|
| 3 x 3 Mounted Bullnose 1 Linear Foot | 2-7/8 x 11-3/4 | 6.4 | 1/8 | UPS |
| 3 x 3 Bullnose Corner | 2-7/8 x 2-7/8 | 6.4 | 1/8 | UPS |
| 3 x 3 Mounted Cove Base 1 Linear Foot | 3-5/8 x 11-3/4 | 6.4 | 1/8 | UPS |
| 4 x 24 Single Bullnose | 3-3/4 x 23-13/16 | 9.5 | 3/16 | UPS |
| 4 x 12 Bullnose Corner Left & Right | 3-3/4 x 11-3/4 | 9.5 | 3/16 | UPS |
| 6 x 12 Cove Base | 5-7/8 x 11-3/4 | 9.5 | 3/16 | UPS |
| 6 x 8 Cove Base Corner Left & Right | 5-7/8 x 7-3/4 | 9.5 | 3/16 | UPS |



4 x 24 Single Bullnose



4 x 12 Single Bullnose Corner Left



4 x 12 Single Bullnose Corner Right



3 x 3 Mounted Bullnose 1 Linear Foot



3 x 3 Bullnose Corner



6 x 12 Cove Base



6 x 8 Cove Base Left



6 x 8 Cove Base Right



3 x 3 Mounted Cove Base, 1 Linear Foot

Product Performance

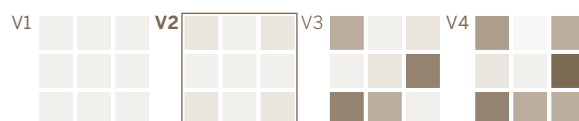
| | | |
|---------------------|------------|------------|
| Breaking Strength | 500 lbf | ASTM C648 |
| Bond Strength | >200 psi | ASTM C482 |
| Chemical Resistance | Unaffected | ASTM C650 |
| Frost Resistance | Resistant | ASTM C1026 |
| Water Absorption | <0.20% | ASTM C373 |
| Scratch Hardness | 7 | Mohs Scale |

Wet Dynamic Coefficient of Friction Range

| | | |
|-----|-------------|-----------------------|
| UPS | 0.50 - 0.60 | AcuTest sm |
|-----|-------------|-----------------------|

Shade & Texture Index

Color Blox 2.0 has a shade variation of V2.



V1 Uniform appearance
V2 Slight Variation
 V3 Moderate Variation
 V4 Substantial Variation

Recommended Use

Color Blox 2.0 is recommended for interior floors, walls, countertops, and exterior walls in both residential and commercial applications. Color Blox 2.0 is not recommended for exterior horizontal surfaces or exterior paving. **If offset pattern is required for tiles 15 inches or longer, Crossville® recommended an offset of not greater than 33%.** See CrossvilleInc.com for detailed installation instructions.

Wet area use for Color Blox 2.0 Mosaics

Crossville® produces the Color Blox 2.0 Mosaics with the Cross-Sheen® (UPS) finish that has an AcuTestsm Wet Dynamic COF of $\geq .50$. Their small sizes ensure frequent grout joints which provides traction and drainage. Crossville cannot control situations involving incorrect installation, improper slope to the drain for elimination of standing water and poor surface cleaning.

This information is provided so that customers may make a realistic and informed decision when comparing Crossville Mosaics to other tile products in wet area environments, such as residential/commercial bathrooms, showers, and interior pool decks.

Care and Maintenance

Regular cleaning is the best way to keep Color Blox 2.0 tile looking good for years to come. Use clean, hot water (combined with a household cleaner for more aggressive cleaning). Rinse thoroughly and dry with a soft cloth. No waxes are needed. More information regarding the care and maintenance of Crossville® products is available at CrossvilleInc.com.

Our Warranty

Crossville Inc. guarantees that its products will meet or exceed the performance specifications outlined in ANSI A137.1- 2012 and in the performance data section of the Crossville, Inc. general product catalog. For complete details check our website at CrossvilleInc.com.

HydroTect™

Our porcelain tiles are available with Hydrotect™. Crossville's revolutionary invisible coating harnesses the power of light, water, and oxygen to create the best defense against dirt and pollution. Whether indoors or out, floors and walls stay cleaner, providing a superior experience in any space. Please request a sample before ordering. For complete details check our website at CrossvilleInc.com.



Crossville® Sample Express

Visit the website to learn more:
CrossvilleInc.com/Products/Color-Blox-2-0

Loose Samples for Architects & Designers

Loose Tile Samples

Sizes may vary depending on product series
Max. of 4 large field tile per order

Replacement Chips for PSS Rack

Max. of 5, 2 x 2 chips per color

Standard Shipping

UPS Ground

CrossvilleInc.com

If you want a better idea of what Crossville tile would look like in a particular room setting, simply visit our website and click on Cross-Vision. This powerful software tool allows you to visualize different types of Crossville tile. In addition, you'll find comprehensive information about Crossville's entire portfolio of products. You can also learn about the latest styles and trends from industry experts, download detailed care and maintenance instructions for our various products, or browse electronic versions of Crossville's product brochures. So whether you need information about Crossville products or tile in general, please visit us at CrossvilleInc.com. Information listed here is subject to change.

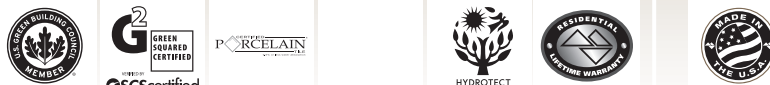
Information listed here is subject to change. Please refer to CrossvilleInc.com for the latest, most accurate information.



Trade Organizations



Environmentally Aware



Color Blox 2.0

Crossville, Inc.

PO Box 1168
Crossville, TN
38557

Phone 931.484.2110
Fax 931.456.2956
E-Mail Crossc@CrossvilleInc.com
Web CrossvilleInc.com



CBX08 ▶ Sea Otter 12 x 24

Shown on cover

Floor: **CBX36** ▶ Just Ducky 12 x 24

Wall: **CBX31** Cotton Sheets, **CBX35** ▶ Celestial Horizon and **CBX38** ▶ Little Boy Blue 6 x 6

